

Intara XR

Article number: 50880007

LIGHT TECHNOLOGY

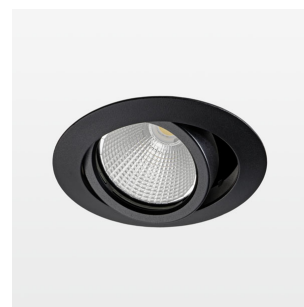
| | |
|----------------------|---------|
| LED | COB |
| Light colour | BeCool |
| Luminous flux | 1230 lm |
| System power | 15 W |
| Luminaire Efficiency | 82 lm/W |
| Reflector | Medium |
| Beam angle | 24° |
| Controller | On/Off |

LUMINAIRE

| | |
|---------------------------|------------|
| Swivel angle | +/- 25° |
| Weight | 0.69 kg |
| Protection rating . class | IP 20 . II |
| Luminaire colour | black |

OPTIONAL

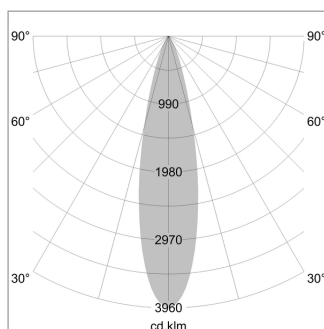
RAL-colours, NCS-colours (powder coating or wet spraying) on inquiry, surface alloys on inquiry, honeycomb louver



Recessed luminaire with LED, rated life of the LED L80/B10 50000 h (tambient 25°C), colour rendering index CRI > 96, chromaticity tolerance 2 SDCM (initial), reflector with circular light distribution pattern, reflector pure aluminium 99,99% in MIRO-Silver®, segmented and faceted, 3D lens silicon to reduce the proportion of scattered light, die-cast aluminium, powder-coated, rotation angle, swivel angle +/- 25°, black,

Inclusiv fix connected driver unit, 220-240 V~ / 50-60 Hz, max. 36 luminaires per circuit (B16A fuse)

Note: All data are typical values. System features may change with product improvements due to technical advances. Errors excepted.



| | | |
|-------|------|-------------|
| 1.0 m | 0.45 | 4263.4 |
| 2.0 m | 0.90 | 1065.8 |
| 3.0 m | 1.35 | 473.7 |
| 4.0 m | 1.80 | 266.5 |
| 5.0 m | 2.25 | 170.5 |
| Ø (m) | | E0(0°) [lx] |

